

## Architectural examples

Left: Attingham House, Shropshire, England.

The design shows a 3, 4, 5 arithmetic progression in the layering of the storeys.



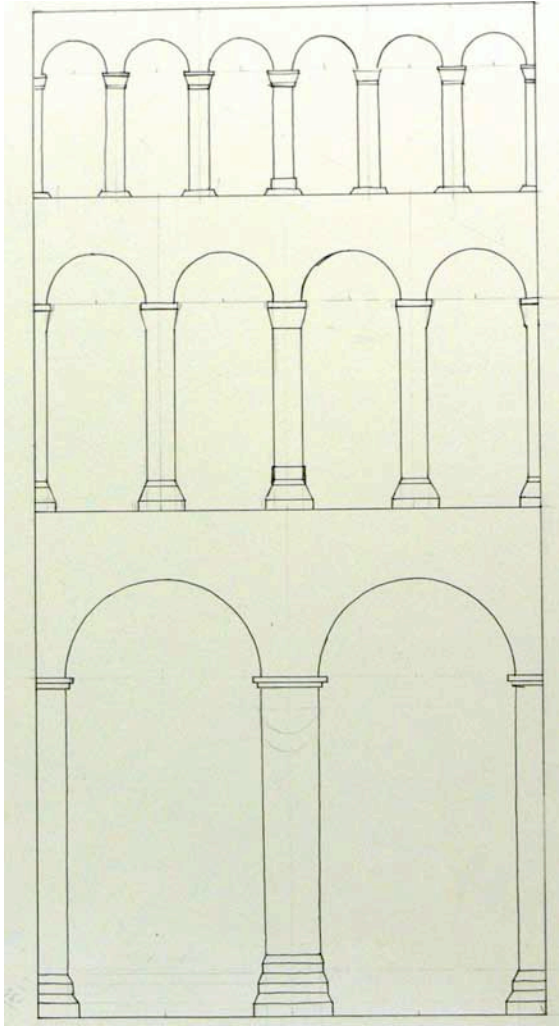
Below: three different views of St Giles in Oxford,

showing the variety of styles, shapes and sizes of building happily sitting together.



Below left, middle: a modern buildings, just off St Giles, showing rigidly even storey size, left, or varied storey size that does not correspond to traditional principles. Below, right: St John's College, Oxford, completed in 1550





A diagram (after Von Simson) and photograph of the Galleries of Angels, Abbey of St Michael, Hildesheim showing the 1:2:3 design in the number of arches





Modern icon of St Joseph, a Catholic devotion, left, and St Paul by the medieval Russian Andre Rublev, below, showing the graceful application of line employing proportional relationships



Left: example of calligraphic lines in the abstract that have a proportional relationship